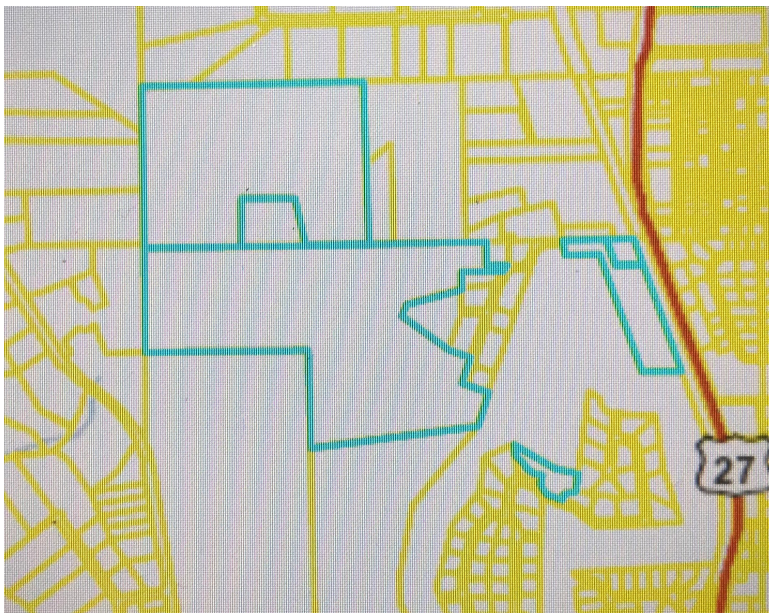
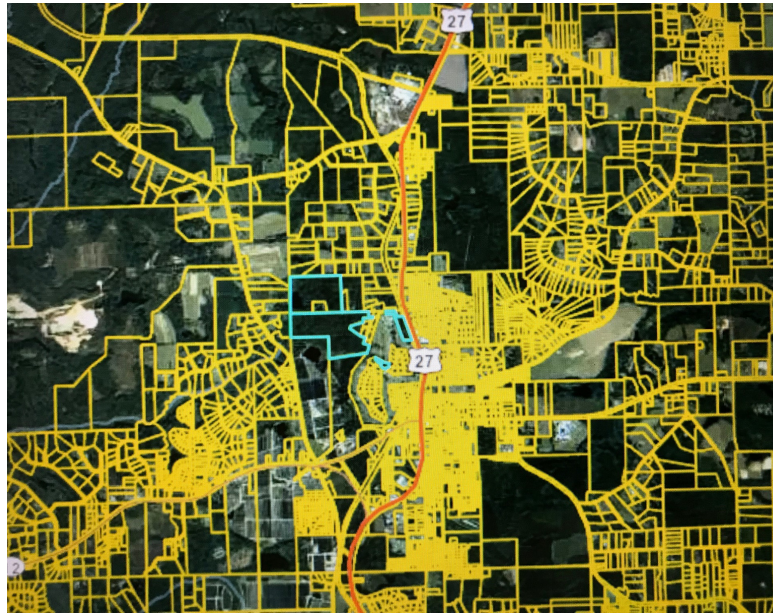
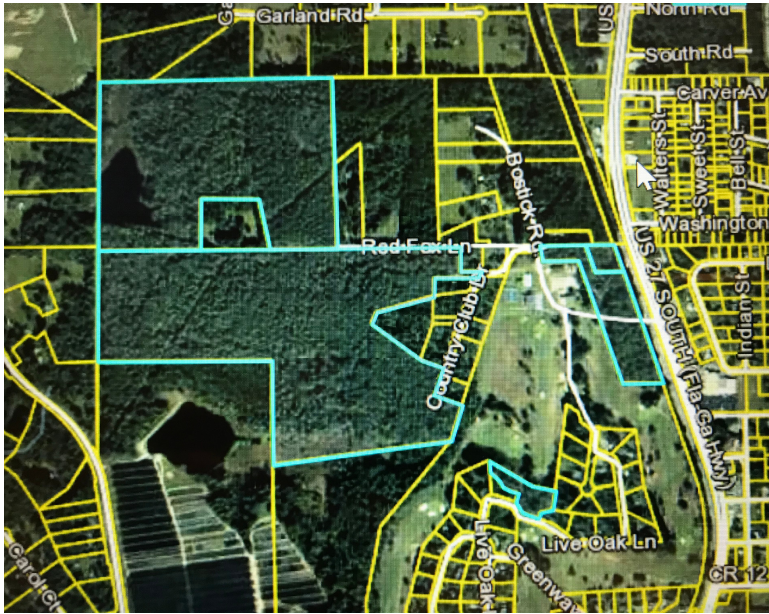


FOR SALE

**HILL
SPOONER**
& ELLIOTT INC.
REAL ESTATE



Development Potential
Havana, FL - 137.44 Acres
\$1,374,400

Multiple Parcels | Development District

First time offered For Sale! Prime Location! Incredible Development potential with multiple parcels adjacent to the Havana Golf & Country Club, access from North Main street. Included in sale parcel #'s 2-27-3N-2W-0000-00230-0000(85.66ac), 2-27-3N-2W-0000-00220-0000(50.78ac), 2-27-3N-2W-0000-00142-0100(1ac) totaling approximately 137.44 acres. Approx. 8ac on both sides of entry to Country Club Dr. has over 1000ft of near frontage to Main St/Hwy 27, approx. 129 acres borders the western side of the Country Club with exceptional potential. Development District designation per Havana Zoning map. Acreage amount and Legal description per public record, subject to confirmation. Contact listing agents for access and questions.



Offered By

Maria Pierce, REALTOR
850.320.2919 Mobile
maria@hillspooner.com
www.Hillspooner.com



Patrick L Hardy, REALTOR
850.294.1232 Mobile
PatrickLHardy@gmail.com
www.PatrickLHardy.com